

THIS DOCUMENT AND ALL INFORMATION THEREIN CONTAINED
 ARE OUR EXCLUSIVE PROPERTY. THE RECIPIENT AGREES
 NOT TO REPRODUCE, COPY, USE OR TRANSMIT THIS DOCUMENT
 AND/OR THE INFORMATION THEREIN CONTAINED FOR
 ANY PURPOSE, EXCEPT WITH OUR WRITTEN PERMISSION

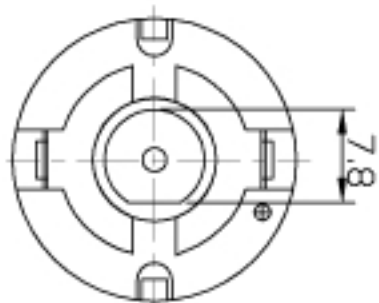
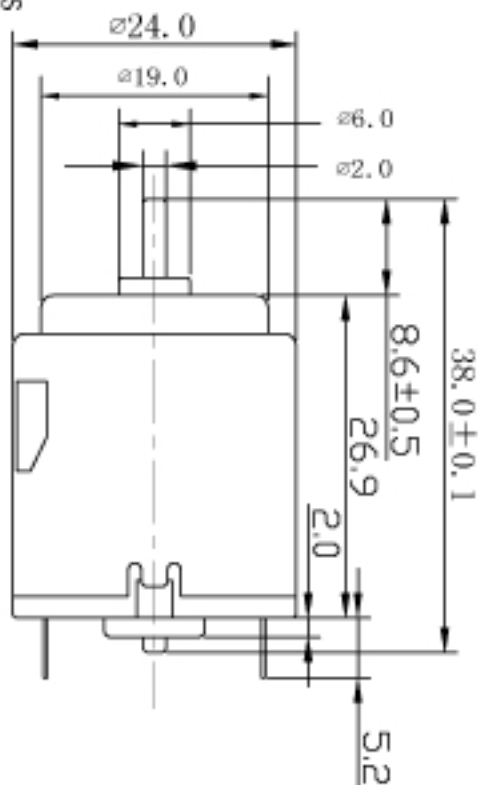
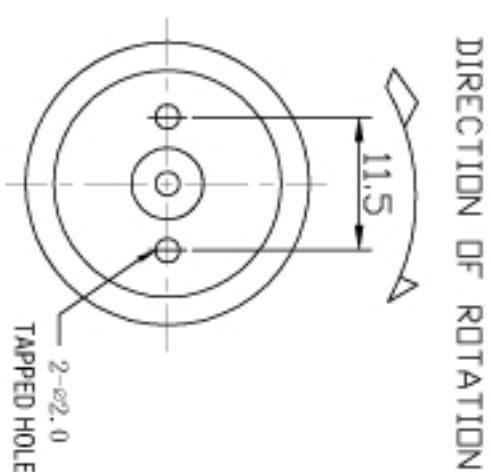
DRAWING CREATED ISO STANDARDS

FÜR DIESE ZEICHNUNG BEHALTEN WIR
 UNS ALLE RECHTE NACH DIN 34 FÜR

版次: A

MODEL: HS-RE260-18130(RDHS)

VOLTAGE: 15 VDC



两端子间加恒定电压

| 本图公差 | | 圆角半径和倒角高度 | | | |
|-------|------|-----------|------|------|------|
| 0-6 | 6-30 | 30-120 | 0-3 | 3-6 | 6-30 |
| ∅0.05 | ∅0.1 | ∅0.2 | ∅0.2 | ∅0.5 | ∅0.8 |

| | | | | |
|--------------------------|-------|----|-----------|--|
| TITLE: | 外形装配图 | A4 | DRAWER: | |
| MATERIAL: | | | CHECKER: | |
| MODEL: | | | APPROVER: | |
| DO NOT SCALE THE DRAWING | | | | |
| DRAWING NO.: A080314-1 | | | | |

MODEL: HS-RE260-18130(ROHS)

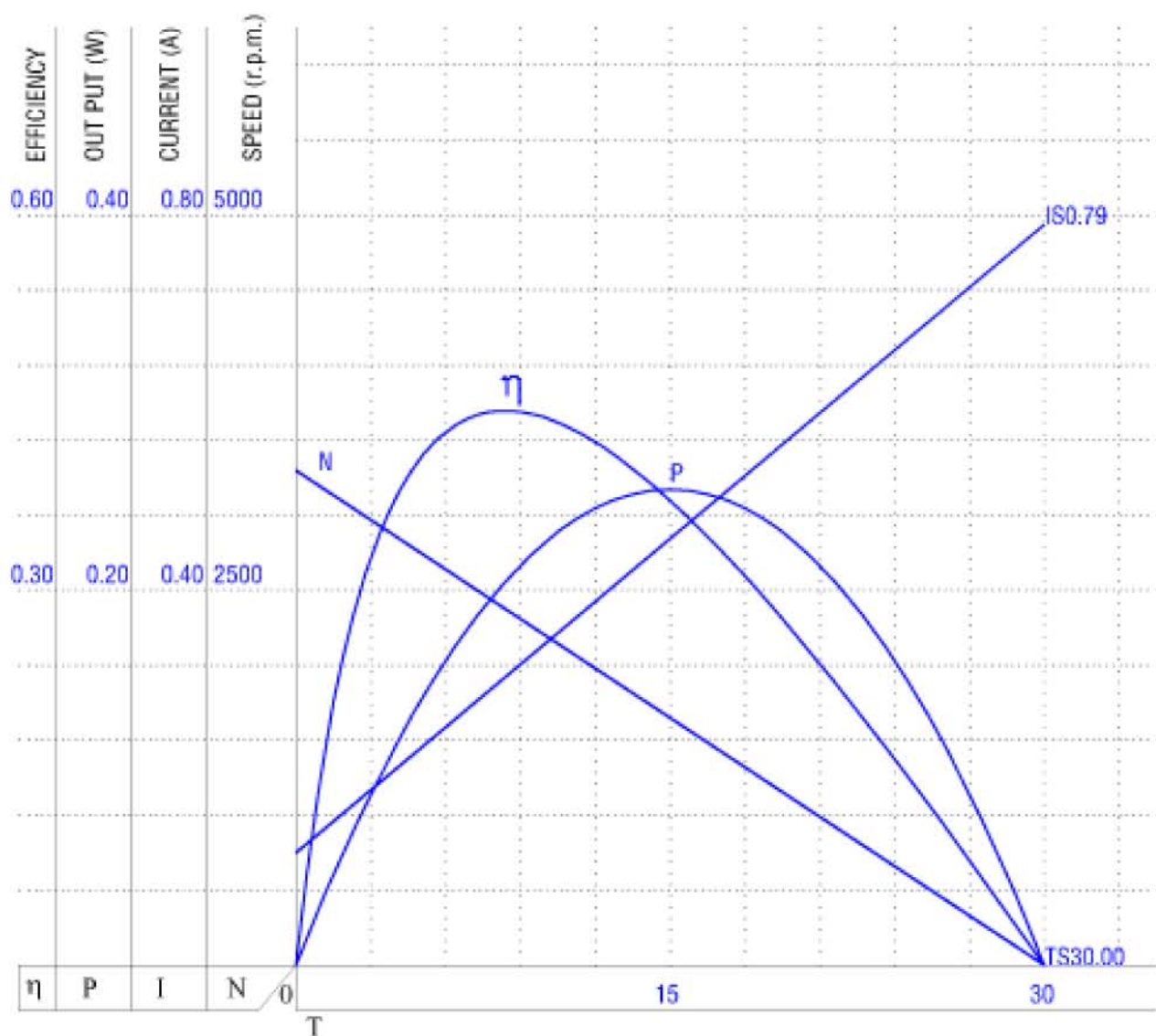
VOLTAGE: 1.50 VDC

LENGTH OF SHAFT (A): 38.0 mm (±0.1)

FRONT EXTENSION (B): 8.6 mm (±0.5)

NOISE: 60 1/2 dBA / inch(Max)

| NO LOAD | | LOAD EFFICIENCY(APPROX) | | | | | STALL | |
|----------------|---------------|-------------------------|---------------|-----------------|---------------|------------------|---------------|-----------------|
| SPEED (r.p.m.) | CURRENT (A) | SPEED (r.p.m.) | CURRENT (A) | TORQUE (g.cm) | OUT PUT (W) | EFFICIENCY (%) | CURRENT (A) | TORQUE (g.cm) |
| 3300 ±10% | 0.12 MAX. | 2375 | 0.30 | 8.43 | 0.20 | 44.36 | 0.79 MAX. | 30.00 MIN. |



CUSTOMER A080314-1 REVISION A DATE 2008-03-14

DRAWN BY 杨香红 CHECKED BY _____ APPROVED BY _____